

# Arduino MEGA - Mega-F5 board

fischertechnik compatible

**OUT** **OUTPUTS**  
M1 (16,17) M2 (~4,~5) M3 (~6,~7) M4 (~8,~9) M5 (~10,~11) M6 (~12,~13) 6-9V (max. 600mA)

**NRF24L01** 3.3V

MISO P12	SCK P13	CE P2	GND
NC	MOSI P11	CSN P7	3.3V

**POWER SUPPLY - ADAPTER**  
**9V** for board and Arduino MEGA

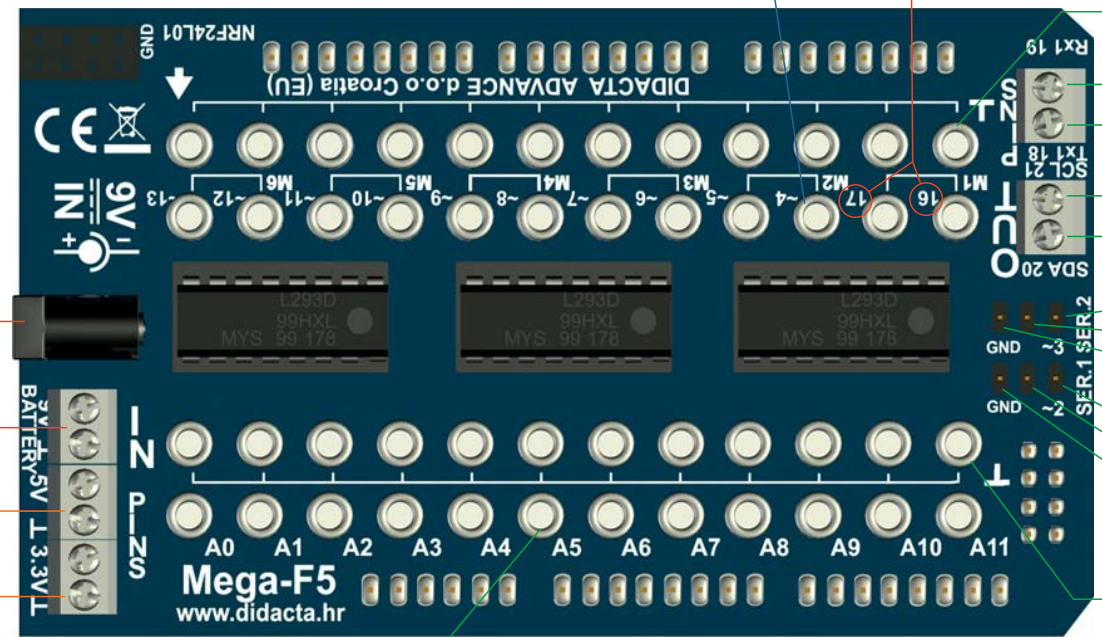
**POWER SUPPLY - BATTERY**  
**9V** for board and Arduino MEGA

**5V** **OUTPUT**  
SUPPLY FOR SENSORS

**3.3V** **OUTPUT**  
SUPPLY FOR SENSORS

**IN** **INPUTS** SIGNAL INPUT (MAX. 9V)  
(A0,A1,A2,A3,A4,A5,A6,A7,A8,A9,A10,A11) digital / analog

Possible printing error on some boards:  
~2 is output 16  
~3 is output 17



- GND (-)
- Rx1 (5V) 19 **UART**
- Tx1 (5V) 18 **UART**
- SDA (5V) 20 **I2C**
- SCL (5V) 21 **I2C**
- SERVO 2**
- SIGNAL (5V) ~3
- VCC (5V- max. 700mA)
- GND
- SERVO 1**
- SIGNAL (5V) ~2
- VCC (5V- max. 700mA)
- GND
- GND (-)